

CERTIFICATE OF LOCATION OF GOVERNMENT CORNER

North Quarter Corner of Section 31, Township 107N, Range 40W, 5th P.M.
 STATE OF MINNESOTA, County of Murray

At the corner location shown on the sketch

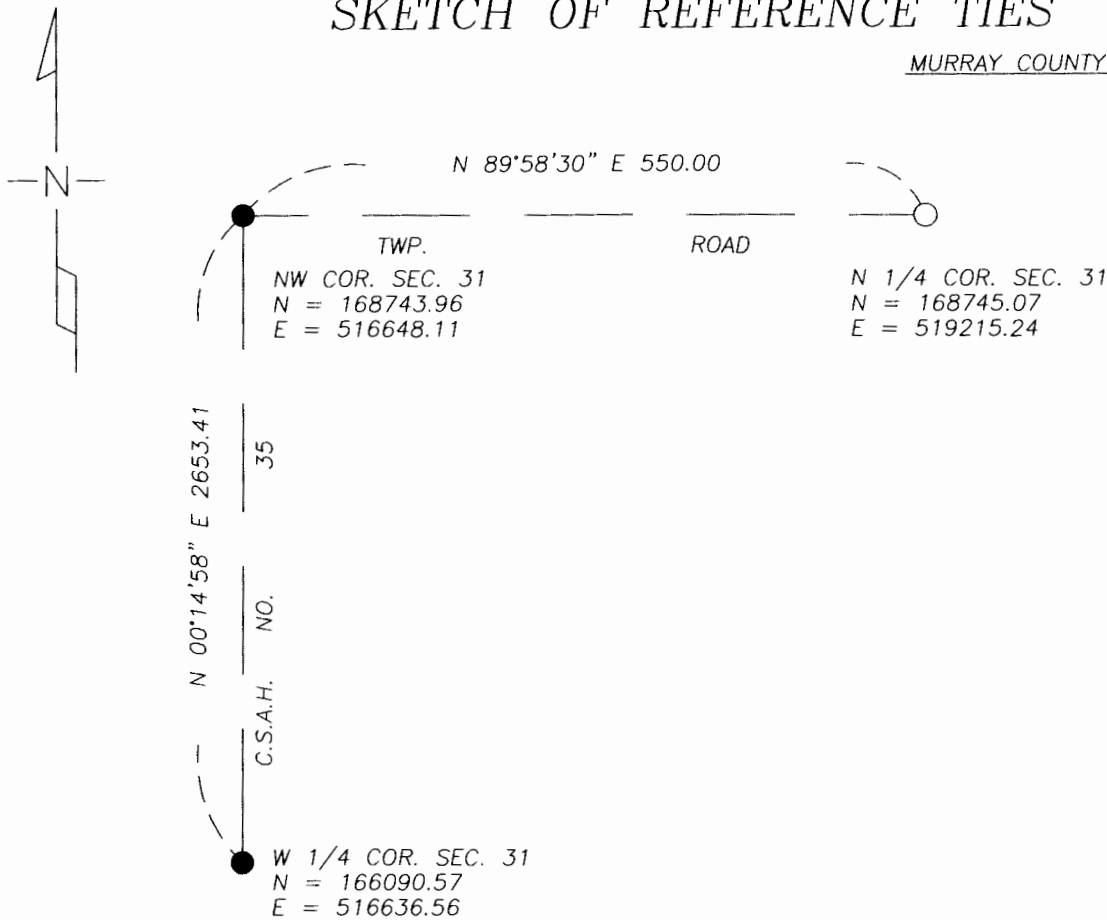
On 10/20/05 found a 8" X 12" stone 3" deep at C Twp. Road.

left monument as found
 lowered monument,
 removed monument (explain)

On 10/25/05 placed a 1" Iron pipe with red survey cap #43803 over top of center of stone.

SKETCH OF REFERENCE TIES

MURRAY COUNTY COORDINATES



I hereby certify that this document and the data contained herein was prepared by me or under my direct supervision.

Perry L. Ziehe 10-26-05
 SIGNATURE DATE

MN. LICENSE NO. 23008

- Land Surveyor, Professional Engineer
 County Surveyor, County Engineer

OFFICE OF THE COUNTY RECORDER

I hereby certify that this document was filed in the Co. Recorder's Office at _____ on the

_____ day of OCT 28 2005

County Recorder James V. Johnson
 By _____, Deputy

DOCUMENT NO. _____